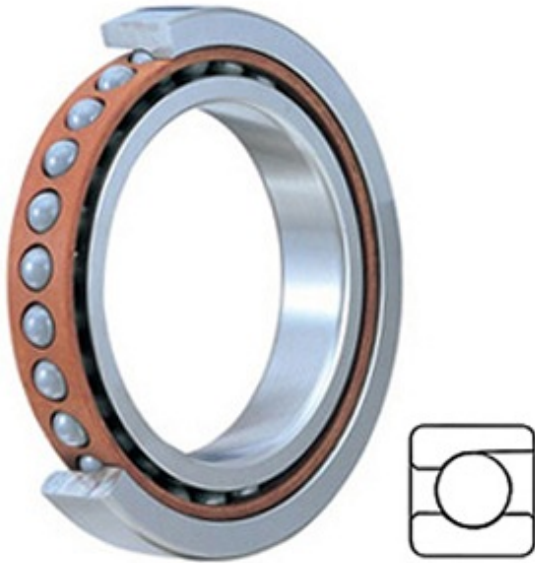




# NACHI BEARINGS LTD



3MM212WI SUM Bearing 2D drawings and 3D CAD models

2.362 Inch | 60 Millimeter x 4.331 Inch | 110 Millimeter x 0.866 Inch | 22 Millimeter TIMKEN 3MM212WI SUM Precision Ball Bearings

Bearing No. 3MM212WI SUM

Category	Precision Ball Bearings
Inventory	0.0
Manufacturer Name	TIMKEN
Minimum Buy Quantity	N/A
Weight	0.789
EAN	0087796333758
Product Group	B04270
Enclosure	Open
Precision Class	ABEC 7   ISO P4
Material - Ball	Steel
Number of Bearings	1 (Single)
Contact Angle	25 Degree
Preload	Medium
Raceway Style	1 Rib Outer Ring
Cage Material	Phenolic
Rolling Element	Ball Bearing
Mounting Arrangement	Universal
Flush Ground	Yes
Inch - Metric	Metric
Other Features	Single Row   Angular Contact   Super High Precision
Long Description	60MM Bore; 110MM Outside Diameter; 22MM Width; Open Enclosure; ABEC 7   ISO P4 Precision;



## NACHI BEARINGS LTD

	Steel Ball Material; 1 (Single) Bearings; 25 Degree Contact Angle; Phenolic Cage Material; 1 Rib Outer Ring Ra
Category	Precision Ball Bearings
UNSPSC	31171531
Harmonized Tariff Code	8482.10.50.28
Noun	Bearing
Keyword String	Angular Contact Ball
Manufacturer URL	<a href="http://www.timken.com">http://www.timken.com</a>
Manufacturer Item Number	3MM212WI SUM
Weight / LBS	1.74
B	0.866 Inch   22 Millimeter
D	4.331 Inch   110 Millimeter
d	2.362 Inch   60 Millimeter